

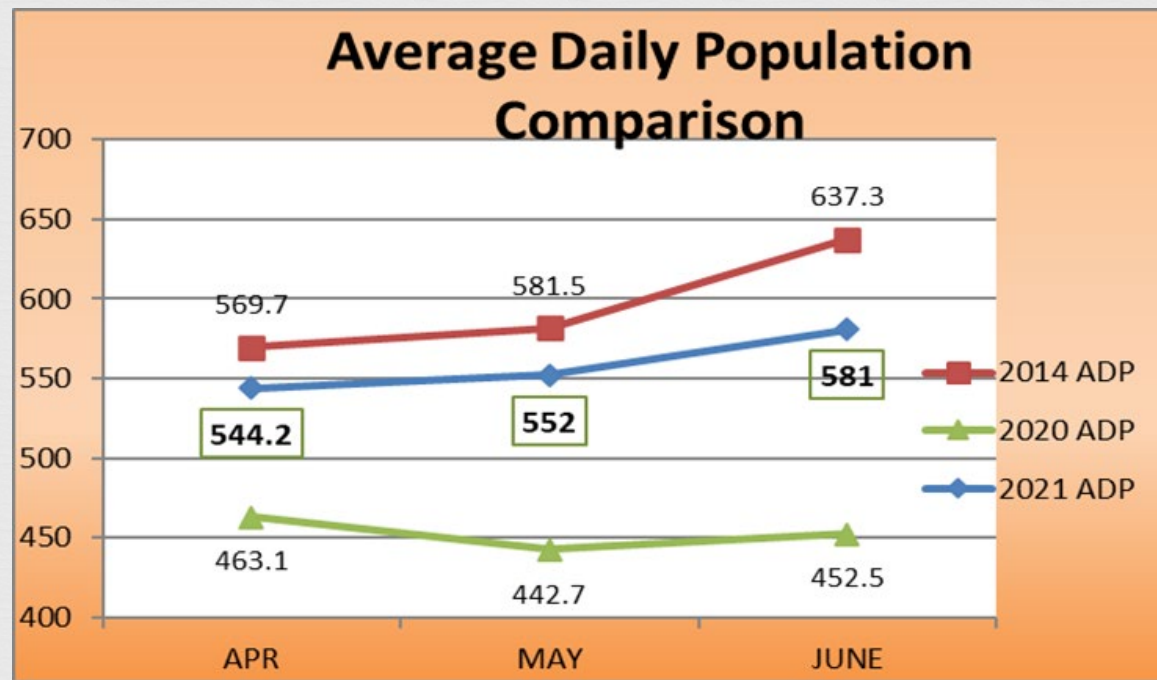
Justice Council

August 6, 2021



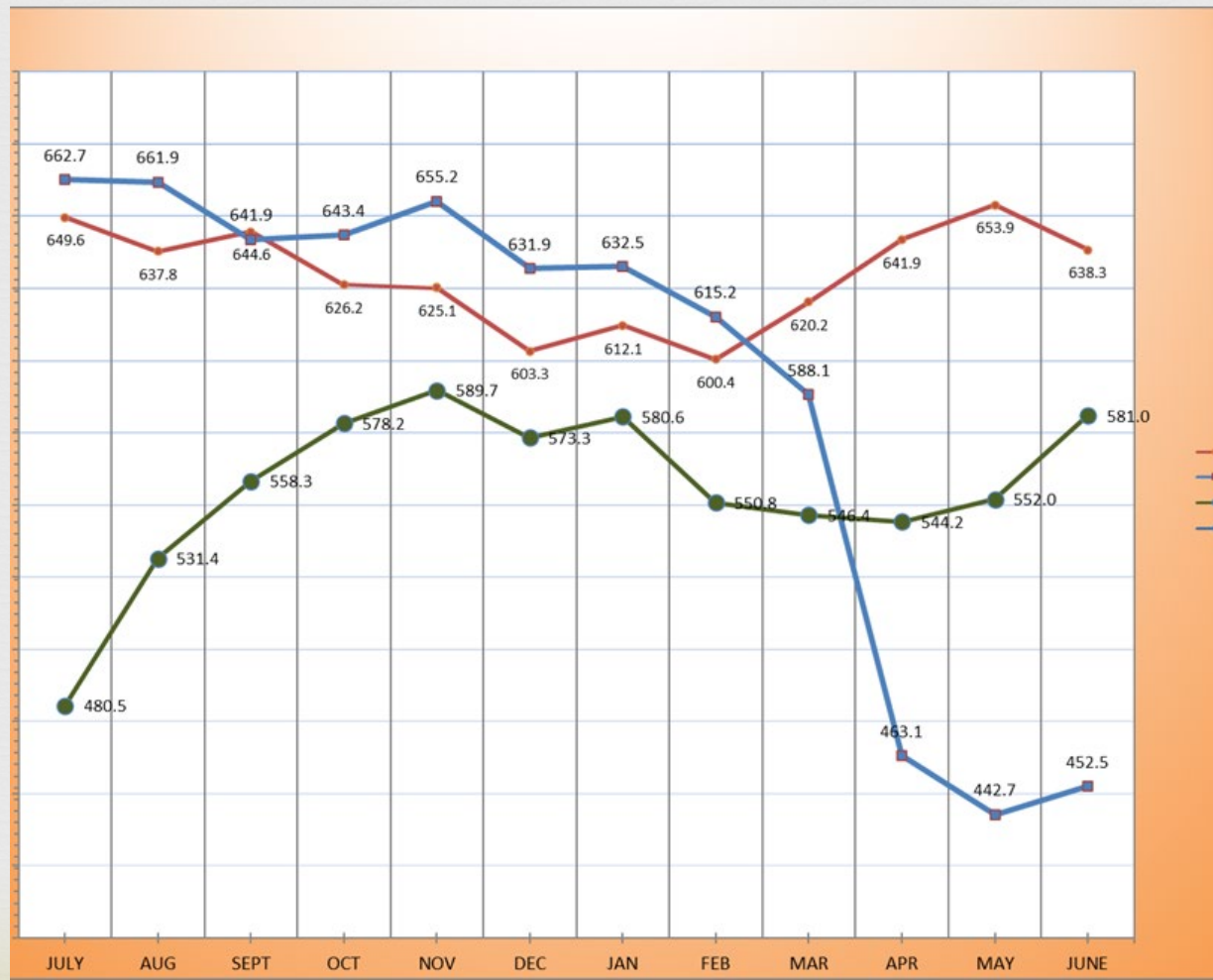
Current Population Trends

Average Daily Population



- The average daily population (ADP) for this period of 2021 was 559.1 detainees compared to 452.8 for the same period in 2020. This is a 23.5% increase.
- This period ADP consumed 84.1% of the department's operational capacity of 665.

Fiscal Year Comparison



Population Status



Status	Total	%
County Pretrial Misd	57	8.9
County Pretrial Felony	380	59.2
City Pretrial Misd	8	1.2
County Sentenced Misd	121	18.8
County Sentenced Felony	55	8.6
City Sentenced Misd	9	1.4
Other	4	0.6

Racial Makeup



Race	Lancaster County	Adult Detention Facility
White	80.6%	52%
Black	4.3%	31%
Hispanic	7.4%	10%
American Indian/ Alaska Native	1%	5%
Asian	4.8%	2%
Unknown	1.9%	1%

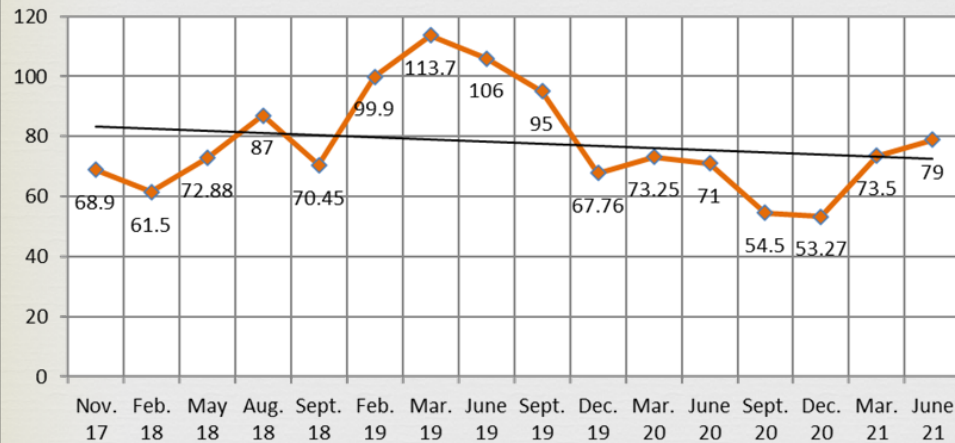
Racial Makeup by Custody Type

	Cnty PT Misd	Cnty PT Fel	Cnty SN Misd	Cnty SN Fel	City PT Misd	City SN Misd
Asian	3%	2%	1%	0%	0%	0%
Black	25%	34%	25%	29%	67%	11%
Hispanic	15%	11%	9%	7%	0%	0%
Native Amer/ A laskan	5%	4%	10%	5%	0%	0%
Unknow n	0%	1%	2%	2%	0%	0%
White	55%	49%	53%	57%	33%	89%

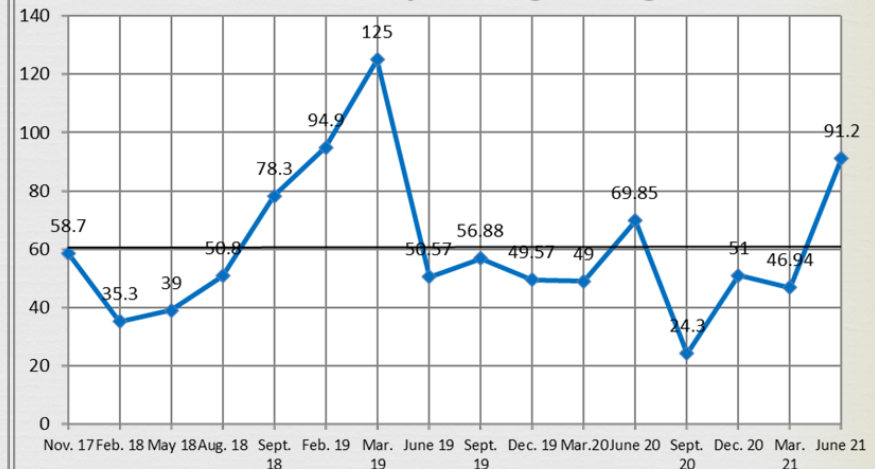
Regional Center Average Days Waiting Historical View



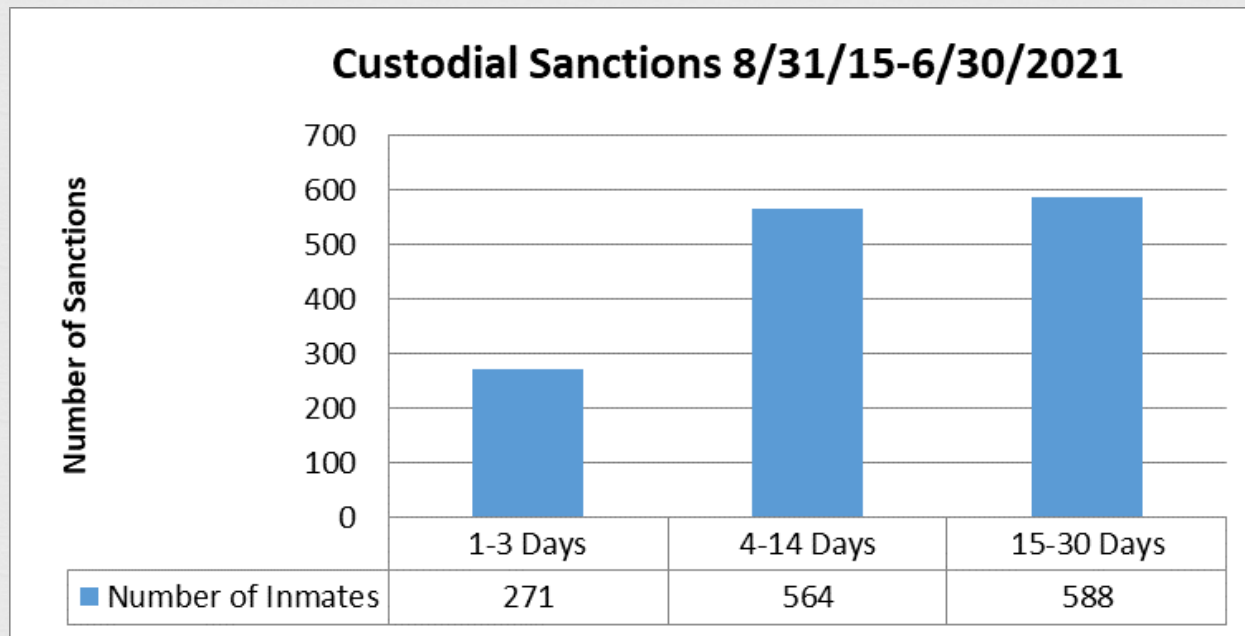
LRC Currently Housed Average



LRC Currently Waiting Average

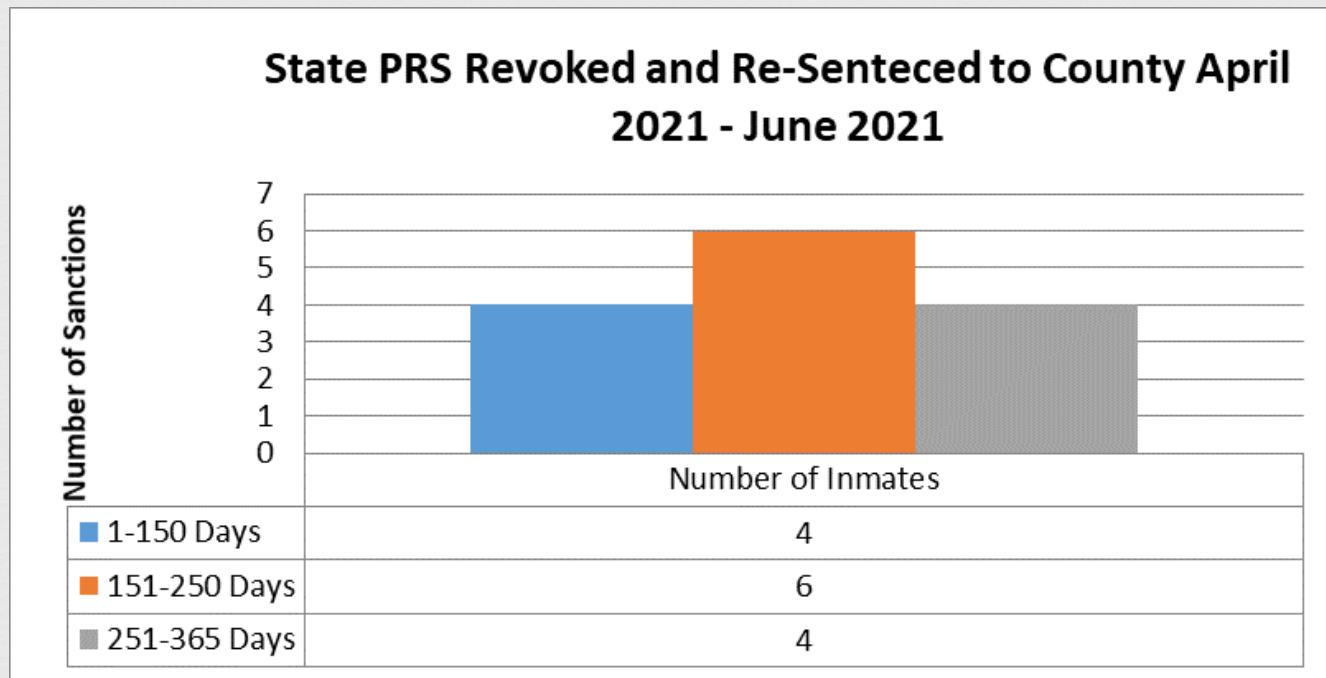


LB 605 Impact



Lancaster County Department of Corrections tracked offenders who were incarcerated for Custodial Sanctions. During the time period, 8/31/15 to 6/30/2021, there have been 1,423 custodial sanctions. These offenders served a total of 22,272 days.

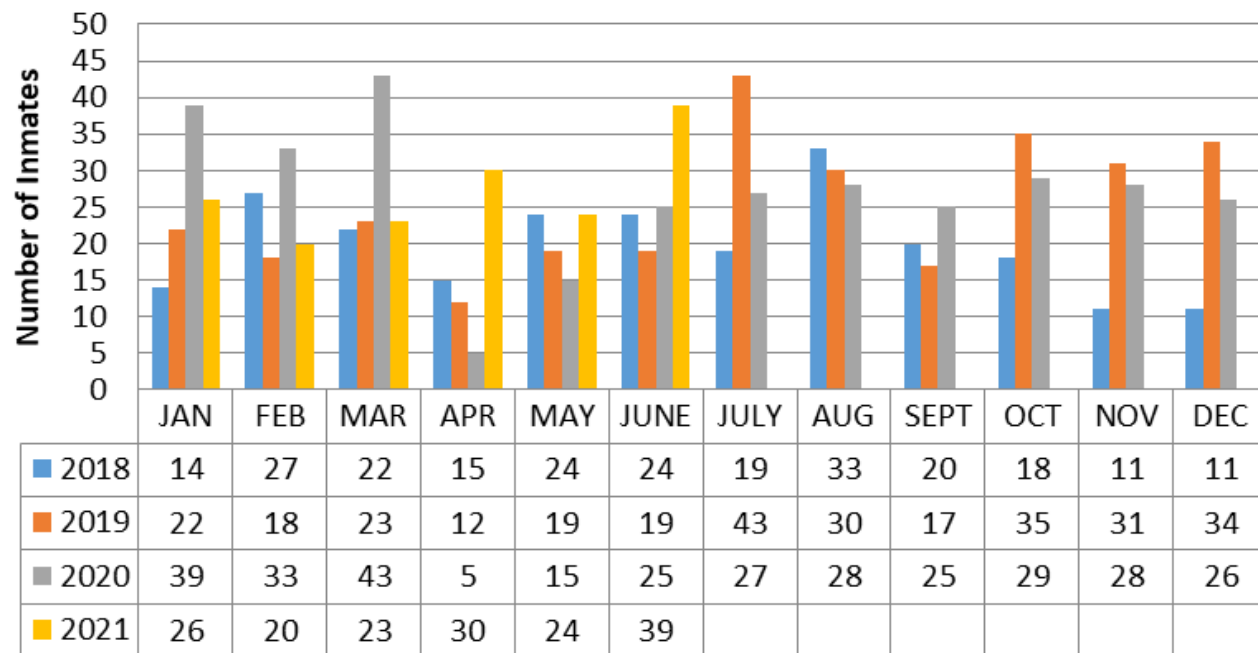
State Sentencing Revocations



These 14 inmates had their State Post Release Supervision revoked and were re-sentenced to county time. These 14 sentences totaled 2,699 days or 192.8 days per individual.

Average Monthly Impact

Number of Inmates Housed on Custodial Sanctions 2018 - 2021



COVID



✂ We have vaccinated about 220 inmates.