

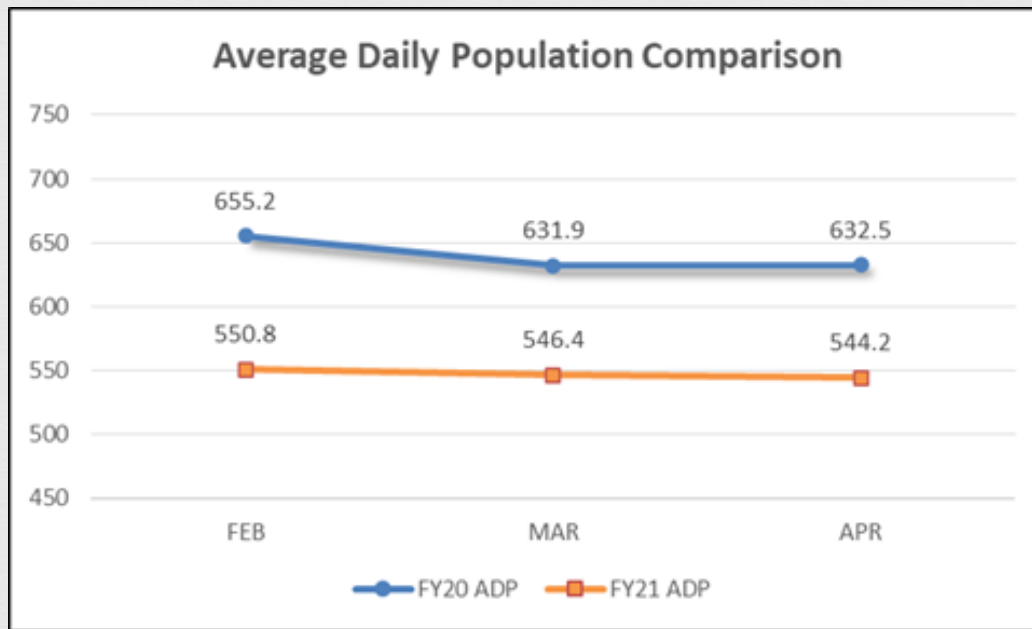
Justice Council

May 7, 2021



Current Population Trends

Average Daily Population



- The average daily population (ADP) for this period of 2021 was 547.1 detainees compared to 639.8 for the same period in 2020. This is a 14.49% reduction.
- This period ADP consumed 82.3% of the department's operational capacity of 665.

Fiscal Year Comparison



Population Status



Status	Total	%
County Pretrial Misd	45	8.3
County Pretrial Felony	310	57.1
City Pretrial Misd	7	1.3
County Sentenced Misd	105	19.3
County Sentenced Felony	59	10.9
City Sentenced Misd	9	1.7
Other	8	1.5

Racial Makeup

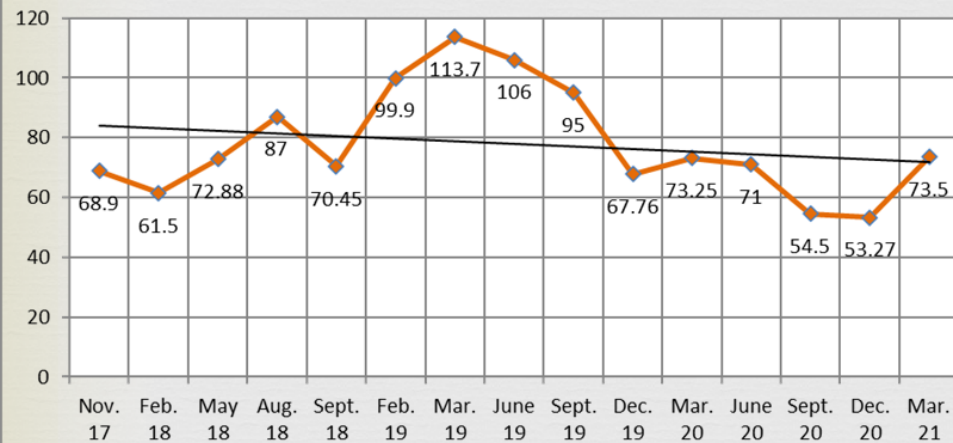


Race	Lancaster County	Adult Detention Facility
White	80.6%	49%
Black	4.3%	31%
Hispanic	7.4%	10%
American Indian/ Alaska Native	1%	7%
Asian	4.8%	1%
Unknown	1.9%	2%

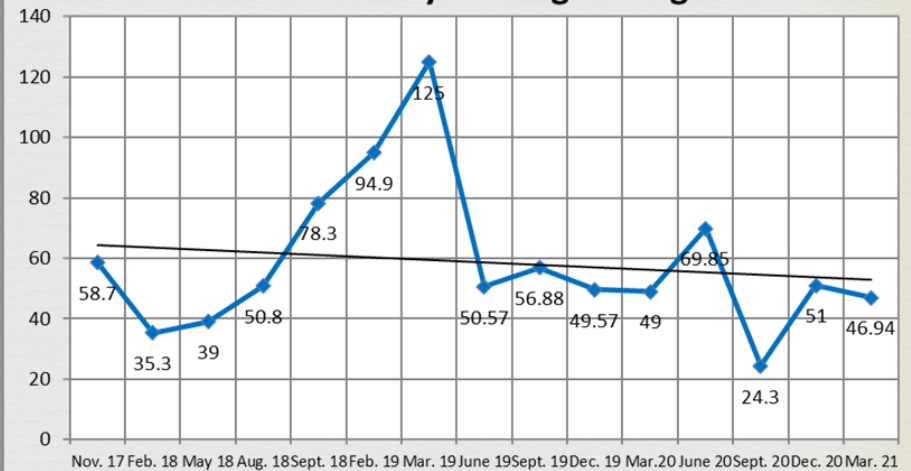
Regional Center Average Days Waiting Historical View



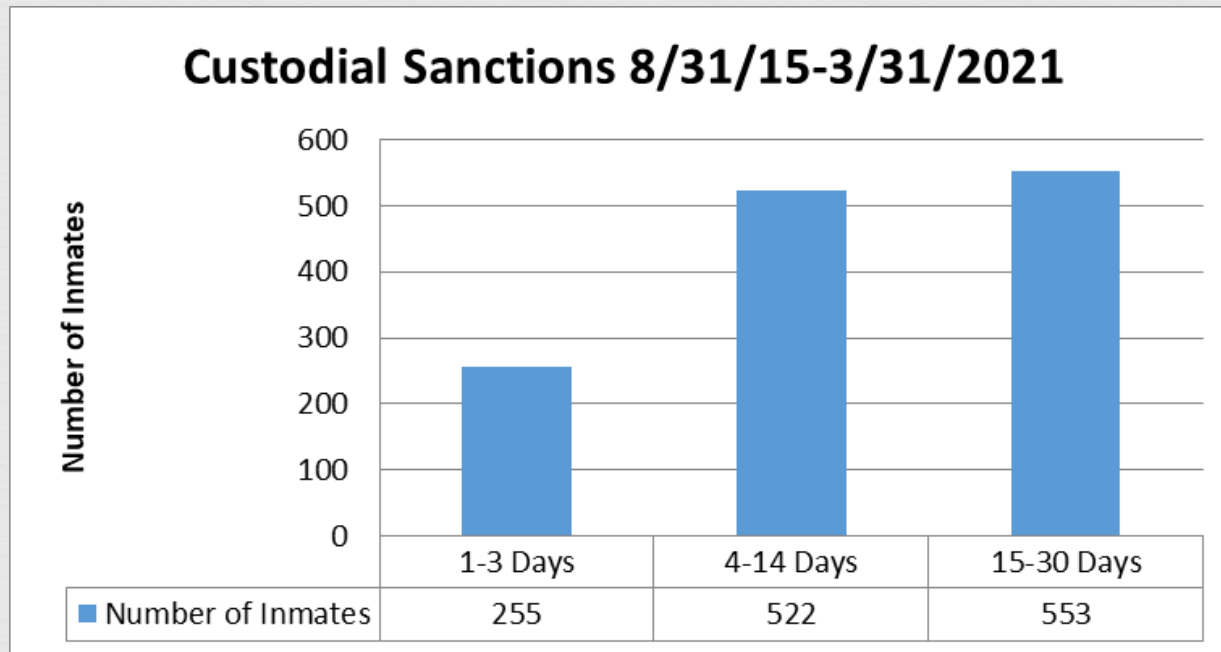
LRC Currently Housed Average



LRC Currently Waiting Average

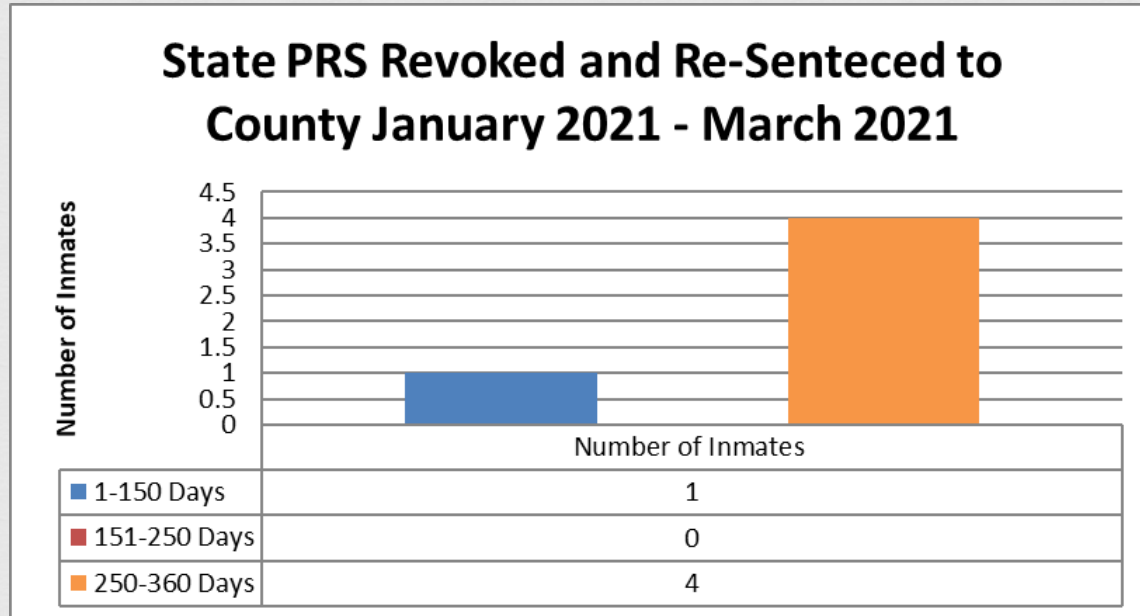


LB 605 Impact

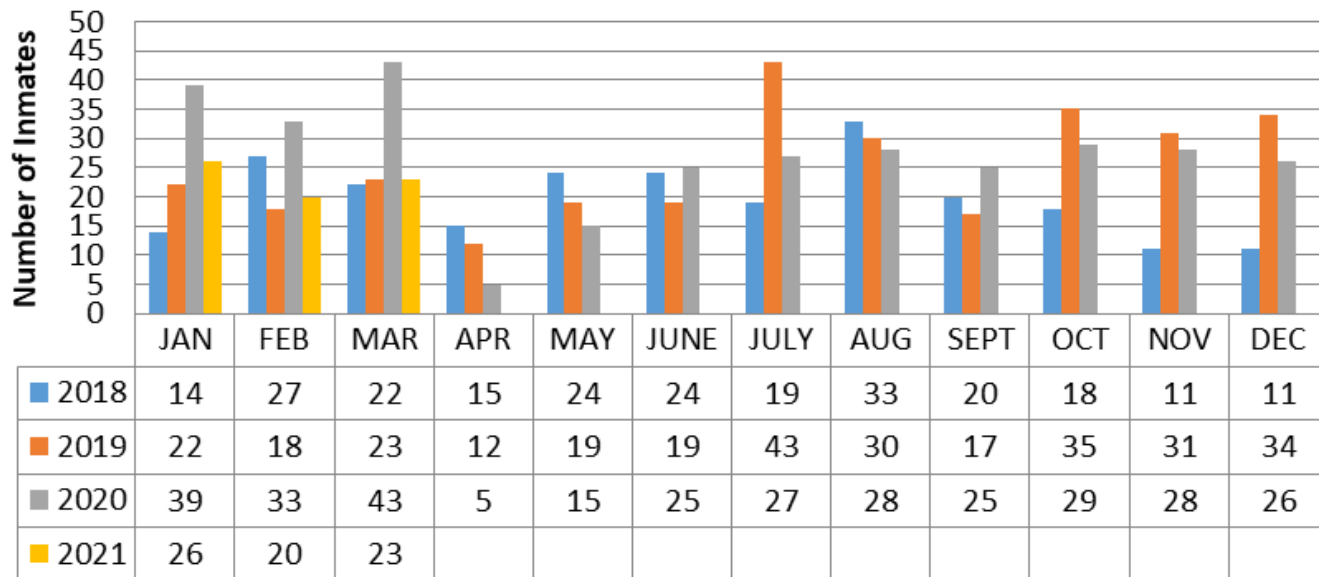


Lancaster County Department of Corrections tracked offenders who were incarcerated for Custodial Sanctions. During the time period, 8/31/15 to 3/31/2021, there have been 1,330 custodial sanctions. These offenders served a total of 20,992 days.

State Sentencing Revocations



These 5 inmates had their State Post Release Supervision revoked and were re-sentenced to county time. These 5 sentences totaled 1,375 days or 275 days per individual.

[illegible]

COVID



✧ We have vaccinated about 150 inmates with their first round of vaccinations.